

Features

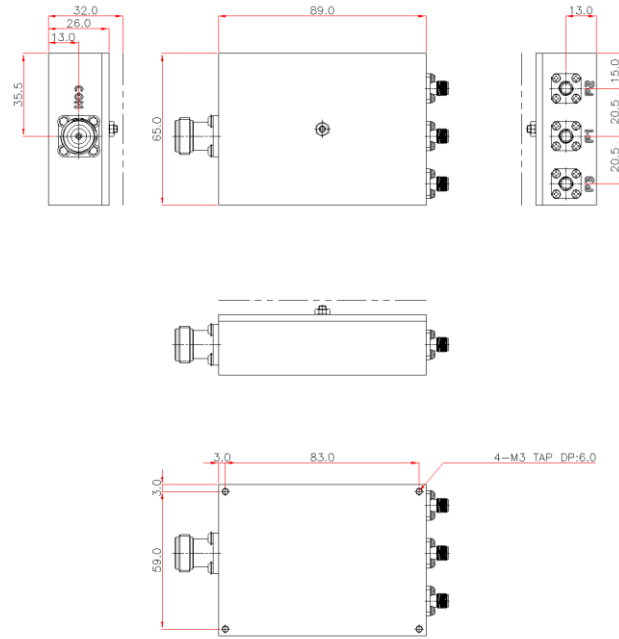
- ADTPX 1380/2550/5800-AN composed of Cavity Triplexer.
- Very compact size and low weight. (89 x 65 x 32 mm)
- 0.4 dB typical Insertion loss @ room temp.



Specifications

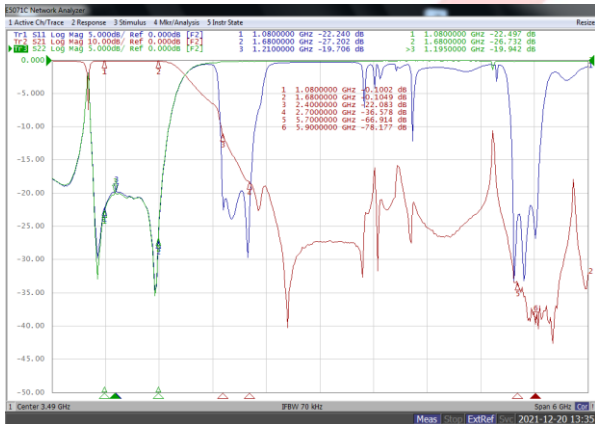
Parameter		Port 1	Port 2	Port 3	Remark
Frequency Range [MHz]		1,080 ~ 1,680	2,400 ~ 2,700	5,700 ~ 5,900	
Bandwidth [MHz]		600	300	200	
Insertion Loss		0.5 dB Max.			
Return Loss		18.0 dB Min.			
Attenuation (Min.)	1,080 ~ 1,680 MHz	-	25 dB Min.	50 dB Min.	
	2,400 ~ 2,700 MHz	20 dB Min.	-	50 dB Min.	
	5,700 ~ 5,900 MHz	50 dB Min.	50 dB Min.	-	
Handling Power (CW)		150 W Max.	50 W Max.	50 W Max.	
Impedance		50 Ω			
Operating Temp.		-20 °C ~ + 80 °C			
RF Connector		SMA(F) to N(F)			
Dimensions		89 * 65 * 32 mm			Exclude connectors

Outline Drawing

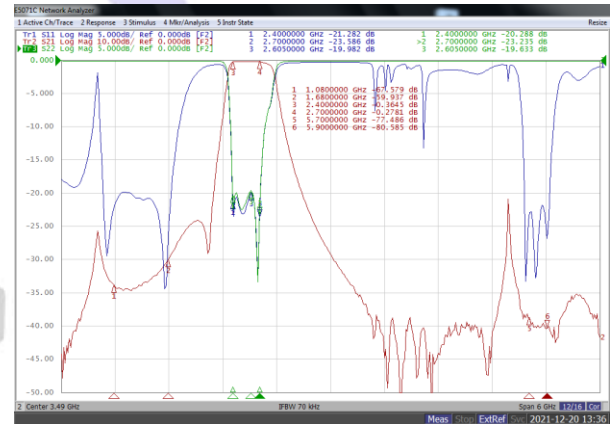


Units : mm, Tolerance : +/- 0.2 mm

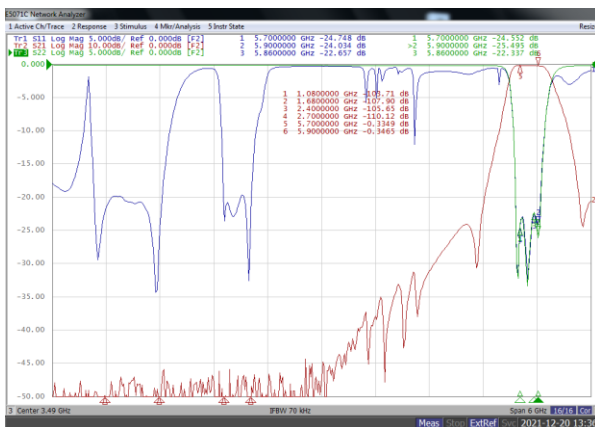
Typical Response



Port 1 (1380) Path



Port 2 (2550) Path



Port 3 (5800) Path

